

What Is Periodontal Disease?

Periodontal disease, or gum disease, is typically a serious infection caused by harmful bacteria that damage the soft tissue and bone supporting your teeth, affecting both oral and overall health.

DID YOU KNOW?

Research supported by the CDC estimates that approximately

47% of AMERICAN ADULTS

have some form of periodontal disease.

Just like bloodwork at your annual physical, saliva testing identifies the bacteria causing the infection and assesses your genetic risk for inflammation.

Alert 2™: The Power of Two:

Bacteria + Genetics

Alert 2™
combines

MyPerioPath® detects 11 harmful bacteria that cause gum disease and threaten oral and overall health

MyPerioID® IL-6 identifies genetic risk for gum infections and inflammation

Other Tests from OralDNA®

- **OraRisk® HPV** identifies 50 types of Human Papillomavirus (HPV) related to oropharyngeal infections and cancers
- **OraRisk® Caries** identifies 3 types of harmful bacteria known to cause cavities
- **OraRisk® Candida** identifies fungal infections caused by the yeast, Candida
- **Celsus One™** evaluates eight gene markers related to your inflammatory response
- **OraRisk® HSV** identifies Herpes Simplex Virus Type 1 and 2

All OralDNA Labs' tests can be ordered from a simple oral rinse collection.

More information at OralDNA.com



7400 Flying Cloud Drive
Eden Prairie, MN 55344
855.ORALDNA (672.5362)

OralDNA.com

Follow us on social media!



OralDNA® Labs, Alert 2™, MyPerioPath®, Celsus One™, MyPerioID®, OraRisk®, and all associated OralDNA® Labs marks are trademarks of OralDNA® Labs, a service of Access Genetics, LLC. © 2025 OralDNA® Labs. All rights reserved.

PL 585 v1.0

25054 

ALERT2™

**Bacteria + Genetics:
Targeted Treatment.
Personalized Care.**



Do You See Pink in the Sink?

Do your gums bleed when you brush or floss?
This is one of the common signs of gum disease.

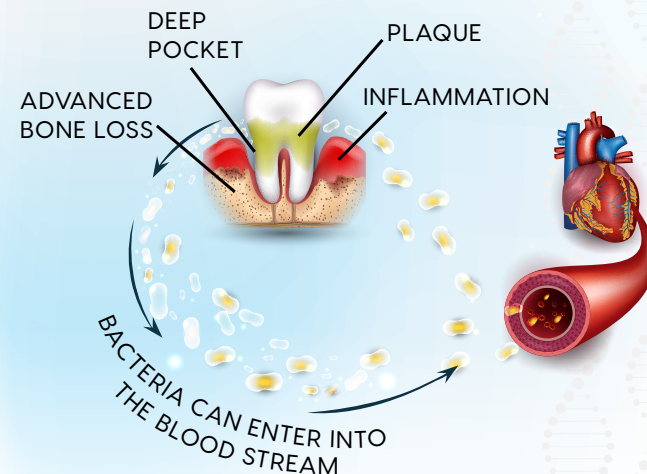
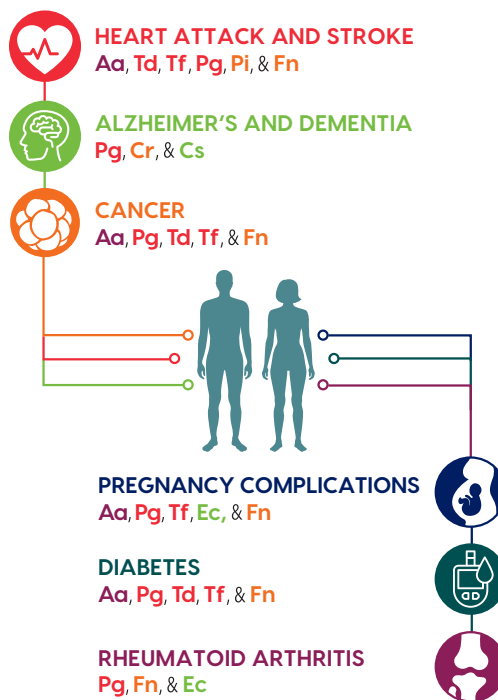
Why Test?

- **Prevent Problems:** Spot issues before bleeding and inflammation begin to affect your health.
- **Get Personalized Care:** Testing ensures your treatment is tailored for the best results.
- **Track Your Progress:** Re-test to see if treatment is working.
- **Test for What You Can't See:** Think of it as an x-ray for bacteria.

| Gene Marker | Risk Category |
|---------------|---------------|
| Interleukin 6 | HIGH |

We can't tell where your ancestors are from, but we can tell you if you're at risk for inflammation!

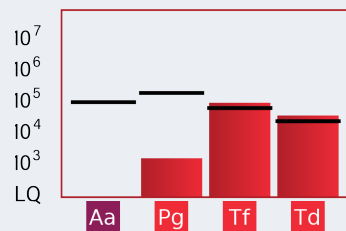
These Bacteria May Leave You at Increased Risk for:



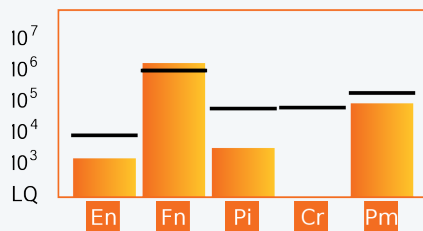
Are You at Risk? Test. Don't Guess!

Gum disease is an inflammatory disease that is triggered by specific bacteria and your body's response to those bacteria. Don't wait for bleeding and inflammation that can result in these harmful bacteria to circulate throughout your body!

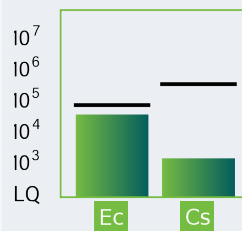
HIGH RISK PATHOGENS



MODERATE RISK PATHOGENS



LOW RISK PATHOGENS



- Aa** Aggregatibacter actinomycetemcomitans
- Pg** Porphyromonas gingivalis
- Tf** Tannerella forsythia
- Td** Treponema denticola
- En** Eubacterium nodatum
- Fn** Fusobacterium nucleatum/periodonticum

- Pi** Prevotella intermedia
- Cr** Campylobacter rectus
- Pm** Peptostreptococcus (Micromonas) micros
- Ec** Eikenella corrodens
- Cs** Capnocytophaga species (gingivalis, ochracea, sputigena)

A simple oral rinse collection is all it takes!

